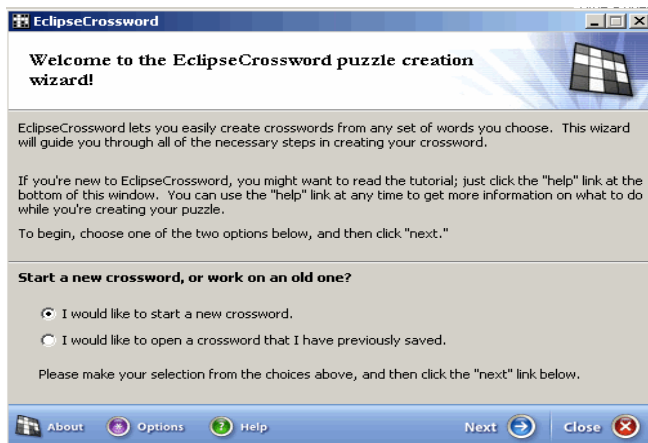
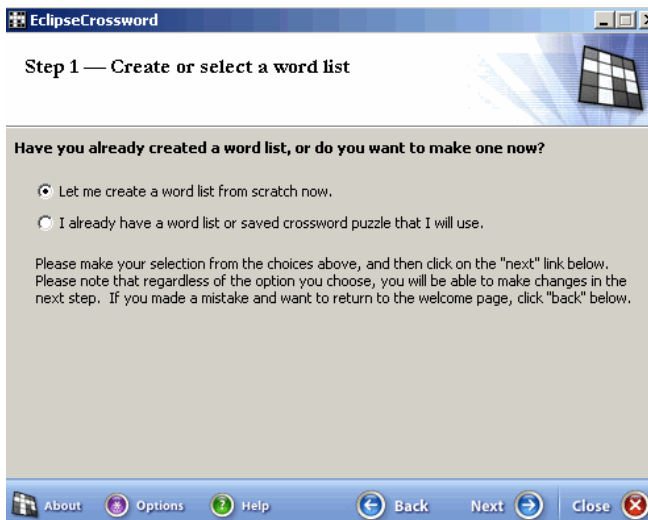


Using Eclipse Crossword

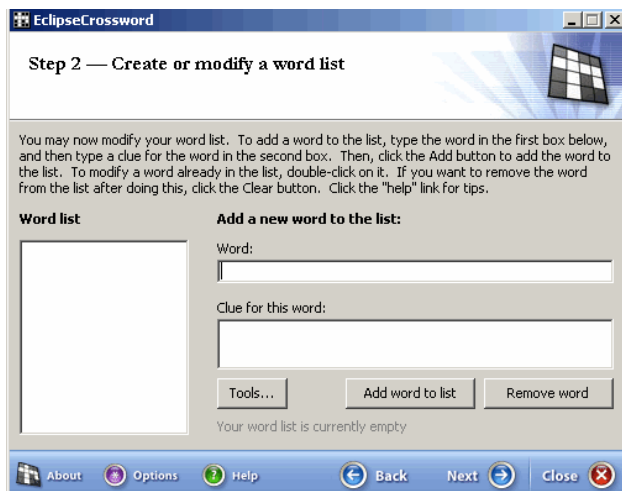
Open Eclipse Crossword



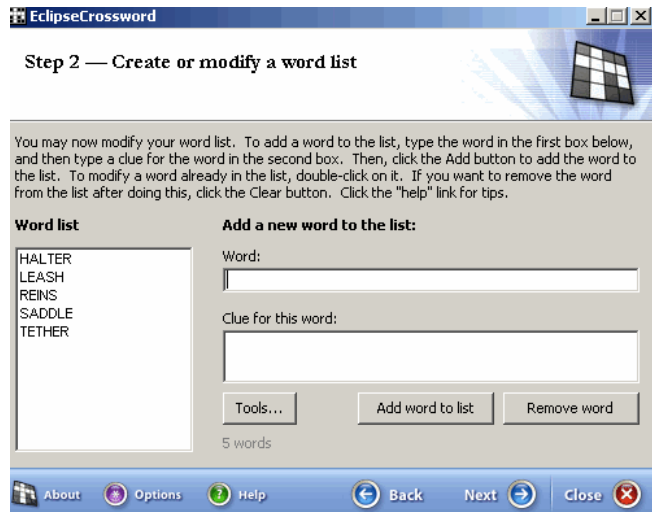
Select the appropriate option –
click Next



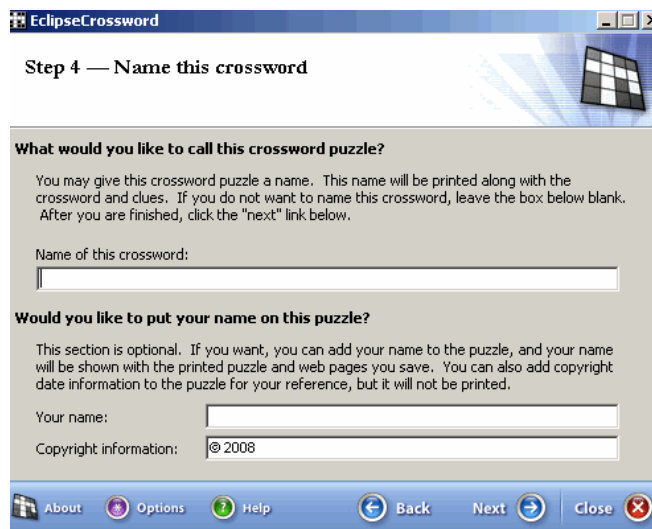
Select the appropriate option -
click Next



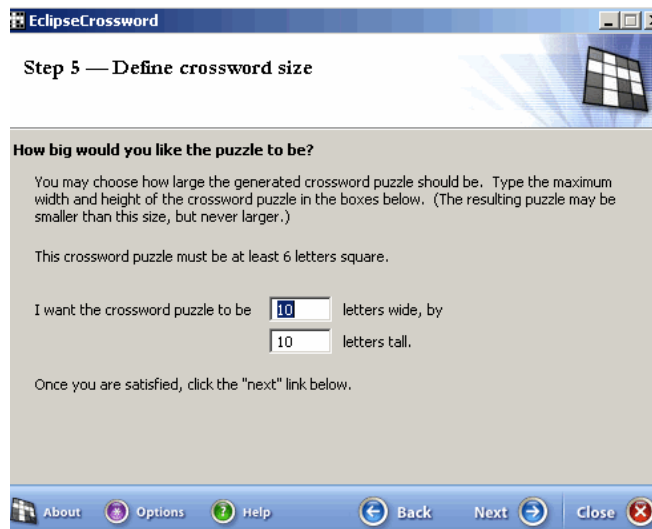
Type in a word in the Word: box, then type
in the clue in Clue for this word: box.
Click on Add word to list and the word will
then show up in the Word list on the left.



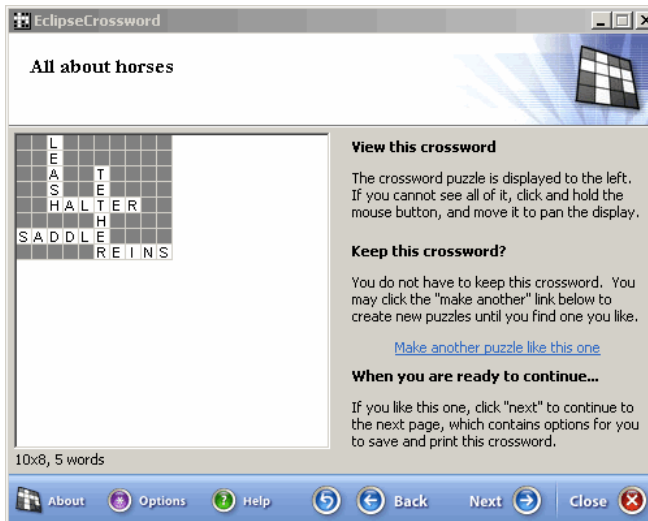
Once all of the words are in your list - click Next
The program will ask if you want to save the list for future use – click Yes or No.
If yes, choose where you want to save the file and give it a name



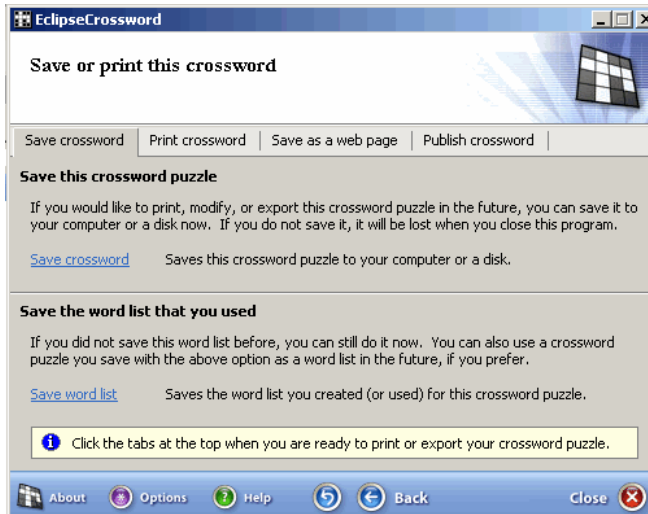
Type in a name for the crossword – click Next



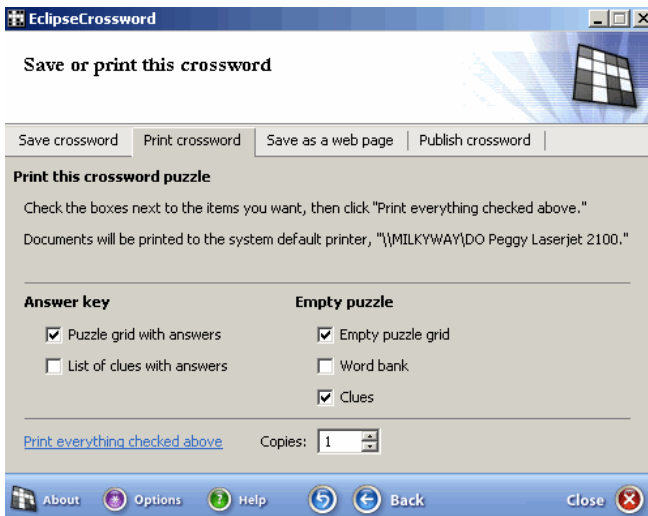
Choose a size for the crossword puzzle – the more words you enter, the larger the crossword will need to be.
Click - Next



View the puzzle, if you don't like the look or layout, click on the **Make another puzzle like this one** link and it will rearrange. Once you have it the way you want, click - Next



From here you can save the crossword, print it or save it as a webpage. You also have another chance to save your word list. If you choose to **Save it**, find the folder you want to save it in, give it an appropriate name and click **Save**



If you want to print the puzzle, click on the **Print Crossword** tab, then choose the options you want and the number of copies. Then click on the *Print everything checked above* link. This will print everything directly to your default printer.

Click **Close** when finished