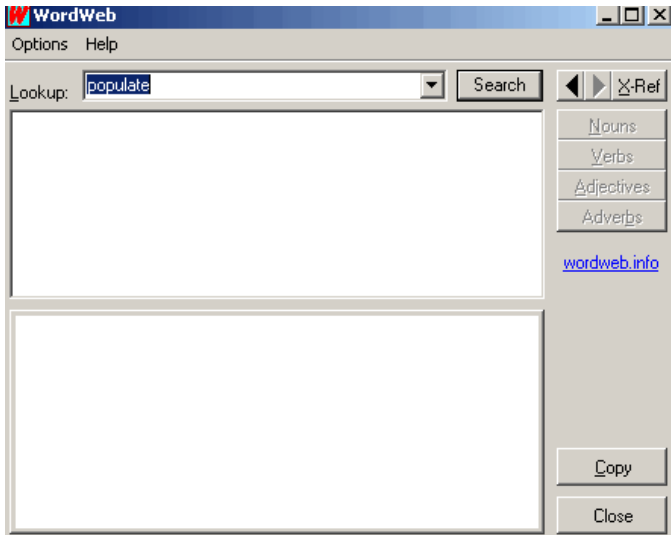
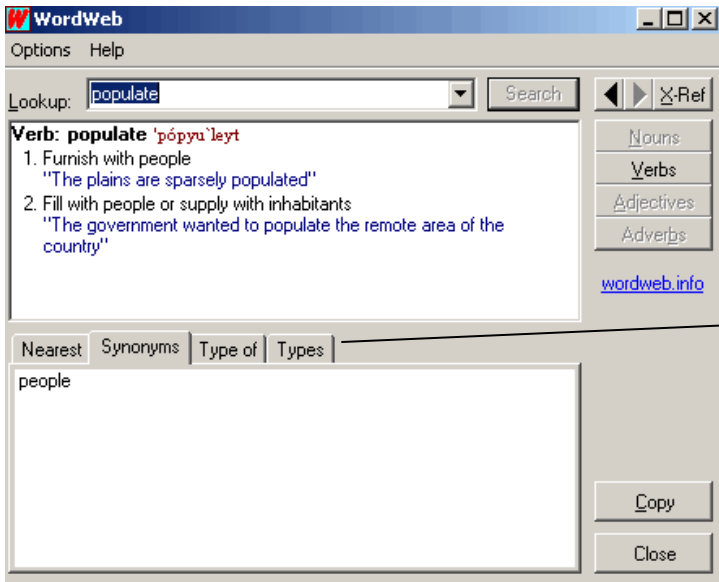


Using Wordweb

The Wordweb icon should show up in the lower right corner of your computer screen.



You can use Wordweb by clicking on the icon to bring up the program, then typing a word in the Lookup box, then click on Search.



Once the search is complete, Wordweb displays the definition, what parts of speech it can be used as, and by clicking on the various tabs at the bottom of the screen, it will give Synonyms and other options.

Wordweb can also be used by highlighting a word, then clicking on the Wordweb icon. For example, if you're using Internet Explorer and a student is on a web page doing research and doesn't know a word, they can simply highlight that word, then click on the icon and Wordweb will automatically bring up the word and definitions.